

NEW



## 3-phase - 63 A direct

### ➤ Function

The **COUNTIS E2x** is an active electrical energy meter designed for three-phase networks. It is used for direct connections up to 63 A.

### ➤ Applications

The **COUNTIS E20** displays the total energy consumed and allows remote access through pulse output. Metering over specific period can be managed through a partial counter.

The **COUNTIS E21** is a double tariff meter meant for dual tariff invoicing. For each tariff a partial counter is available.

### ➤ Conformity to standards

- IEC 62053-21 class 1

➔ Front panel



➔ Electrical characteristics

**Current measurement**

Type	63 A direct - 3-phase
Input consumption	0.8 VA max. per phase
Startup current ( $I_{st}$ )	40 mA
Minimum current ( $I_{min}$ )	0.5 A <sup>(1)</sup>
Transition current ( $I_{tr}$ )	1 A <sup>(2)</sup>
Reference current ( $I_{ref}$ )	10 A <sup>(3)</sup>
Permanent overload ( $I_{max}$ )	63 A
Short-time over-current	1890 A max for 10 ms

**Voltage measurement**

Range of measurement	230 ... 400 V +/- 20 %
Consumption (VA)	2 VA max.
Sustained overload	280 V phase-neutral / 480 V phase-phase

**Energy accuracy**

Active (according to IEC 62053-21)	Class 1
------------------------------------	---------

**Power supply**

Self supplied	Yes
Frequency	50/60 Hz

**Output (pulsed)**

Number	1
Type of optocoupler	IEC 62053-31 Class A (20 ... 30 VDC)
Fixed weight of impulses	100 Wh
Impulse duration	100 ms

**Operating conditions**

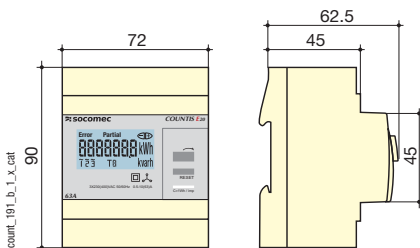
Operating temperature	-10 to 55 °C
Storage temperature	-20 to 70 °C
Relative humidity	85 %

(1)  $I_{min} \leq 0.5 \cdot I_{tr}$

(2) The accuracy class is guaranteed between  $I_{tr}$  et  $I_{max}$ .

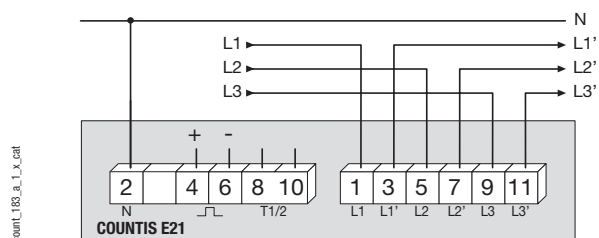
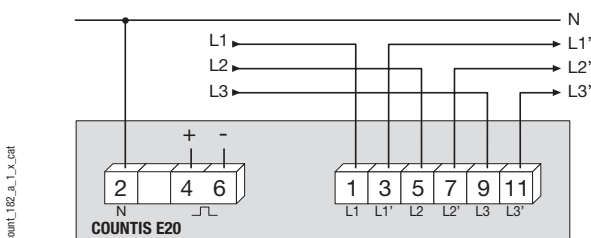
(3)  $I_{ref} = I_{tr}$  (base current) =  $10 \cdot I_{tr}$  for direct connection COUNTIS.

➔ Case



Type	Modular
Number of optional modules	4
Dimensions W x H x D	72 x 90 x 62.5 mm
Case protection index	IP20
Front protection rating	IP51
Display type	Backlit LCD display
Rigid cable connection section	1.5 to 16 mm <sup>2</sup>
Flexible cable connection section	1 to 16 mm <sup>2</sup>
Weight	245 g

➔ Connection



➔ References

Type	COUNTIS E20 Reference	COUNTIS E21 Reference
63 A direct - 3-phase	4850 3003	
63 A direct - 3-phase - Dual tariff		4850 3004